

# Installation and Operation Manual

Effective March 6, 2023



## Cosmopolitan Collection

Mineral Composite Shower Bases

**Installer:** This booklet must be given to the product owner.  
Please include important information below:

<b>Distributor Name</b>
<b>Model Number</b>
<b>Manufacturer's Date</b>
<b>Serial / Registration Number</b>

# Owner's Manual & Installation Guide

Thank you for purchasing an MTI Baths product.

The instructions in this booklet will provide you with the information needed to install and maintain this unit. The ease of cleaning and the elegant look will provide you with many years of pleasure. This information is also available on **mtibaths.com**.

Our customer service department is available to answer any additional questions you may have pertaining to installation and care of your MTI product. Please call **800-783-8827** to speak to our Service Department or email **service@mtibaths.com**.

## Table of Contents

Important Safety Instructions .....	4
Installation Instructions .....	5–6
Care and Cleaning Instructions .....	7
Residential Warranty.....	8–9
Commercial Warranty.....	10–11



## Important Safety Instructions

This manual contains information and instructions for proper handling, operation and maintenance of your MTI shower system. Failure to follow these instructions could result in personal injury, electrical shock or fire.

### **WARNING: WHEN USING ELECTRICAL PRODUCTS, BASIC PRECAUTIONS SHOULD BE FOLLOWED INCLUDING THE FOLLOWING**

Do not permit children to use this unit unless they are closely supervised by an adult at all times. Supervision is also required when product are used by an elderly or handicapped individual.

Never leave a running shower unattended.

Use this unit only for its intended use as described in this manual. Do not use attachments not recommended by the manufacturer.

### **DANGER**

Never operate electrically connected devices in or within 5' of the shower.

To reduce the risk of injury, enter and exit the shower slowly.

To avoid the possibility of personal injury and discoloration of the surface, the inlet water temperature should not exceed 60° C (140° F).

**Installer/Owner bears all responsibility to comply with all state and local codes when installing this product.**

**SAVE THESE INSTRUCTIONS**



## Installation Instructions – General

Read all instructions before installing the shower base or any portion of the shower system. MTI recommends using a professional installer for this product. Installer/product owner is responsible for complying with all state and local codes.

**WARNING:** Certain cleaning products will permanently damage the surface. Read product label carefully before using any cleaning product. Never use anything abrasive, aerosol sprays or any product that is described as “scrubbing bubbles.” Please see ‘Care & Cleaning Instructions’ on pg. 7.

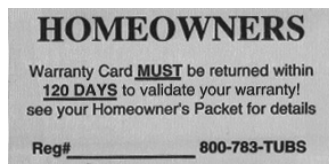
### BEFORE INSTALLING

- Inspect product(s) thoroughly.
- Damage from shipping or delivery must be reported to carrier immediately. Do not install damage unit(s). MTI is not responsible for damage that occurs during transit.
- Factory defect must be reported to MTI Baths before unit is installed. Defects or damage claimed after installation will be excluded from warranty.
- Measure shower base on site carefully to ensure proper fit into planned opening. Factory-installed tile flange is 1/16" thick. Account for this thickness for each side with flange when planning final opening size.
- Specifications are subject to change without notice. MTI is not responsible for any preparatory labor or materials.
- Always protect product(s) from construction damage by using a protective cover. Damage, including chips and scratches incurred at the jobsite are excluded from warranty, but may be repaired by a qualified technician at the owner's expense. Do not stand in the shower base prior to installation or store materials in the unit during construction. Shower bases and other shower system products are intended for indoor use and warranted for indoor installation in a climate controlled environment only.
- Do not store product in temperatures below 32° Fahrenheit.



**Never leave a running shower unattended.**

### WARRANTY CARDS



**IMPORTANT:** Locate and note your serial number on the cover of this manual for any future service needs.



# MINERAL COMPOSITE SHOWER BASE INSTALLATION

MTI shower bases are not equipped with leveling feet and are constructed to install on a flat, level subfloor. MTI recommends a professional contractor to determine the best way to achieve the finished product and function desired.

**IMPORTANT!** Read all instructions carefully before beginning installation.

**Protective Surface Cover** The protective cover should be left in place during installation. Peel it back to inspect the product surface, but replace it before continuing with installation. When installing the drain, peel it back once again for access during this process only. Replace protective cover after drain is installed. Once all parts of installation are complete, remove protective cover last.

## Installation Procedure

1. Inspect product thoroughly. Ensure drain location is correct.<sup>1</sup> Make sure the size and color match what was ordered and any necessary tile flanges are in place. Factory-installed tile flange is  $\frac{1}{16}$ " thick. Account for this thickness for each side with flange when planning final opening size.
2. Check floor surface for level. The area supporting the shower pan must be perfectly level and flat without dips or waves in the surface.
3. Place shower base into position. Check the shower base to ensure it is level from front-to-back side-to-side, and diagonally. If there are any uneven areas, remedy this with a floor-leveling product prior to installing the shower base. Allow time for any floor-leveling product to dry completely per the product recommendations before attempting to install the shower base. Do not attempt to use shims to level the shower base.
4. Re-check the subfloor and shower base for level.
5. Pre-drill or mark the tile flange at each stud location. Remove tray.
6. Insert drain fitting into drain opening on tray. Use silicone sealant on the underside of the flange on the drain fitting. Apply silicone to PVC and ABS fittings as thread sealant.
  - ⚠ Do not use plumber's putty on plastic threads, as this may cause damage over time.
  - ⚠ Do not allow plumber's putty to come into contact with the surface of the tray.
7. Install gasket and female fitting onto threaded male drain until snug.
8. Apply polyurethane construction adhesive, such as Sika Pro Select or Loctite PL Premium, to subfloor, as shown in **Fig. 1**.
9. Lay shower base onto subfloor. Be sure drain is aligned with drain opening in floor. Apply pressure around perimeter of the tray starting with a front corner and working toward the center of the tray. Check level front-to-back, side-to-side, and diagonally before securing tile flanges to the studs (**Fig. 2**). Use screws to secure tile flange to studs in marked locations.
  - ⚠ Do not use nails to secure tile flange to studs.
10. Complete drain installation.<sup>2</sup>
11. Water test before completing installation to ensure proper drainage.
12. Use a bead of clear silicone along the top edge of the tray wherever the tile flange is installed to ensure a water tight seal behind the walls.

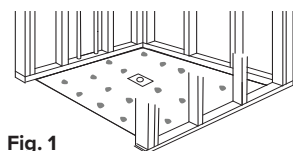


Fig. 1

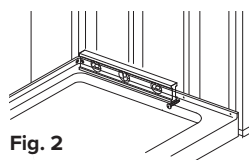
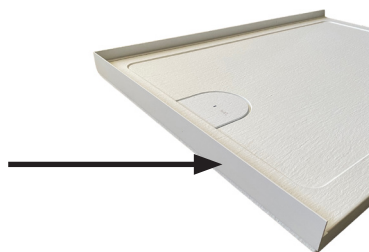


Fig. 2

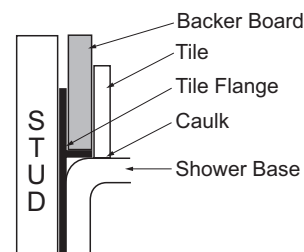
### Tile Flange

Multiple-threshold shower bases can include a factory-installed tile flange on up to 3 sides. Tile flange is adhered to the shower base at the factory; this facilitates installation and enables a watertight seal on any sides specified.

Tile flange shown installed on shower base.  
Available on 1, 2, or 3 sides.  
Tile flange locations must be specified at time of order.



Factory-installed tile flange is  $\frac{1}{16}$ " thick.  
Account for this thickness for each side with flange when planning final opening size.



<sup>1</sup> MTI shower bases have a  $\pm\frac{1}{2}$ " tolerance and are subject to change at any time. Take all final installation dimensions from the shower base(s).

<sup>2</sup> MTI does not warrant leaks associated with improper drain installation and will not be responsible for any costs related to improper installation. For assistance, contact MTI's Service Department at 800.783.8827 or email [service@mtibaths.com](mailto:service@mtibaths.com).



# Care and Cleaning Instructions — Mineral Composite

## ABOUT the mineral composite shell

Mineral composite has a stain-resistant, non-porous surface. With normal use, this surface will retain its inherently glossy appearance with only a minimal amount of care.

### When Cleaning

- Remove dust and dry dirt with a soft, damp cloth.
- Apply common household, non-abrasive cleaner in accordance with manufacturer's directions and precautions. (i.e., a mild dishwashing detergent such as Ivory Liquid). Do not use unless the product label specifically states that it is safe for acrylic or plastic.
- Rinse well and dry with a soft, clean cloth. Scouring pads will deteriorate the finish.
- Never use any type of "scrubbing bubbles" or aerosol spray cleaners on your mineral composite product.
- Never use bleach, ammonia or organic solvents, such as lacquer, alcohol, acids or alkalis to come into contact with the product surface.
- Never use abrasive cleansers. If any product feels gritty when rubbed between your fingers, do not use on the mineral composite surface or system controls as permanent damage will occur.

**WARNING:** Check cleaning and bathing product labels. Do not use unless the product label specifically states that it is safe for acrylic or plastic. Some non-abrasive products damage the surface over time.

### General Care

- Do not allow the mineral composite surface to come into contact with nail polish, nail polish remover, Wintergreen oil, dry cleaning solution, lacquer thinners, gasoline, pine oil, etc.
- Avoid using razor blades or other sharp objects that might scratch the surface.
- MTI strongly recommends a professional surface repair person for deep scratches, chips or gouges.
- Damage occurring to the unit during installation is the responsibility of the installer, and after installation, the responsibility of the user.



## MTI Baths, LLC

### Residential Limited Lifetime Product Warranty<sup>1</sup>

MTI Baths is proud to offer the Residential Limited Lifetime Product Warranty set forth below for Cosmopolitan Collection shower bases (the "Products"). This Limited Warranty is in lieu of all other warranties.

**Application:** This Limited Warranty applies solely to Products purchased from an authorized MTI Baths distributor or retailer after March 1, 2023 and installed in the United States. This warranty is product specific and extends only to the original consumer/purchaser of the MTI Baths Product. Original purchase and installation must be within the boundaries of the continental USA<sup>2</sup>. The warranty terminates after transfer of ownership or if the product is installed or relocated outside the boundaries of the continental USA by the original consumer/purchaser prior to the expiration of the warranty period. Warranty coverage begins from date of purchase. Proof of purchase must be provided to MTI Baths upon request. Display floor models and overstock sale units are excluded from this Limited Warranty. Drain kits and accessories that are not manufactured by MTI are excluded from this product warranty.<sup>3</sup> Accessories manufactured by MTI Baths carry a one year warranty for parts only.

**Lifetime Warranty:** MTI Baths warrants that its Products are free of defects in material and workmanship for the lifetime of the product to the original purchaser so long as (1) the Product is installed, maintained and used according to MTI Baths' recommended installation and maintenance procedures and usage instructions, and (2) use of the Product is limited to personal, family or single household purposes. Product installation location must be an indoor, climate-controlled, residential environment.

**Shell:** MTI Baths (MTI) warrants the shell of the mineral composite shower base against defects in material and workmanship for the lifetime of the product to the original purchaser. Slight variations in the surface are indigenous to the natural stone appearance and do not compromise the structural integrity of the product, therefore are not considered defects or flaws. Blemishes, air holes or casting marks on the underside of the base are not considered defects and do not affect the performance or quality of the product.

**Exclusions:** This Limited Warranty does not apply to or cover defects, damage or other failures that are the result of normal wear and tear of Products, unauthorized or unreasonable use or improper handling; caused by freight carriers, installers, users or other persons; or accidents or acts of God (e.g. earthquakes, floods, storms). MTI is not responsible for the cost of removing or reinstalling the Product or costs associated with any adjacent materials.

MTI Baths is not responsible for any damage caused by failure to follow Product instructions; neglect by the user during use of the Product; incorrect operation; lack of proper routine maintenance; the use of improper cleaners, abrasives, food, beverages (e.g., red wine), bathing products with harmful dyes or other contents (e.g., glitter), medicinal products (e.g., mecurochrome), make-up or hair dye; cigarette burns or burns from hot appliances; or misuse of any kind. MTI does not warrant leaks associated with improper drain installation or connections supplied by the installer. This warranty does not cover noises that result from poorly located or improperly installed or maintained plumbing vents. Improper installation of, or any alteration, customization or modification to the Product voids this Limited Warranty in its entirety. MTI Baths is not responsible for any damages caused by leaving a running shower unattended<sup>4</sup>.

The Product must be water tested for proper drainage, system operation, and leak detection prior to final installation and installed per the installation instructions provided. Failure to do so will void this warranty.

MTI BATHS IS NOT LIABLE FOR INCIDENTAL OR CONSEQUENTIAL DAMAGE, LOSS OF TIME, INCONVENIENCE, INCIDENTAL EXPENSES, LABOR OR MATERIAL CHARGES OR ANY OTHER COSTS RELATED TO THE APPLICATION OF THIS WARRANTY.

**Warranty Claim Process:** All claims under the Limited Warranty must be submitted in writing to MTI Baths within 10 days following discovery of the basis of the claim. All such claims must be submitted to [service@mtibaths.com](mailto:service@mtibaths.com) to obtain authorized service. Each claim must set forth the date of discovery, a description of the defect, the name and address of the installer of the Product, the date and address of installation, and the type or style of the Product.

The product warranty must be registered within one hundred twenty days from purchase. The product warranty must be registered before service for any malfunction or defect can be authorized. Registration can be completed online at [mtibaths.com/contact-us/warranty-registration/](https://mtibaths.com/contact-us/warranty-registration/) or mailed to MTI Baths at 670 N. Price Rd. Sugar Hill, Georgia 30518. Any claim submitted via an alternative method or without the required information shall be null and void.

---

<sup>1</sup> Commercial customers please refer to our Commercial Warranty.

<sup>2</sup> Exceptions for Alaskan and Canadian Customers: MTI Baths extends the complete Limited Lifetime Product Warranty to any mineral composite shower base installed within a 75-mile radius of an Authorized MTI Distributor. Any installation site outside the 75-mile radius will be covered for two years, parts only. Exceptions for Hawaiian Customers: MTI Baths extends the complete Limited Lifetime Product Warranty to Hawaiian customers on the islands of Maui, Kauai and Oahu only. All other locations will be covered for two years, parts only.

<sup>3</sup> Many drain kits and accessories carry a factory warranty direct from the manufacturer. Terms vary among manufacturers. Special order finishes for drain kits are excluded from this product warranty.

<sup>4</sup> Never leave a running shower unattended.



## MTI Baths

### Residential Limited Lifetime Product Warranty\*

Damage that occurred in transit is the responsibility of the carrier. The consignee must open and inspect the Product for damage when it is delivered. If the Product is damaged, this must be reported immediately to both the seller and the carrier in writing and an inspection must be requested. In the event that the carrier fails to respond, report such response to both the seller and the carrier. Any freight claims must be filed within ten business days. The installer(s) or person(s) (Consignee) acting on behalf of the Product owner is responsible for ensuring that the Product is free of defect or damage prior to installation. The Product Owner or Consignee must open and inspect the Product for damage when it is delivered. Product damage must be reported prior to installation.

**Warranty Performance/Limited Remedy:** As the sole and exclusive remedy, and MTI Baths' sole liability, for breach of the Limited Warranty, MTI Baths, will, at its election, repair, replace or make appropriate adjustments to the Product. MTI reserves the right to inspect the malfunction or defect on site and repair or replace the Product at its discretion. In all cases a reasonable time must be allowed for commencement and completion of warranty repairs, replacements, or adjustments. Repairs will be made by an authorized MTI Baths repairer. Replacement parts and/or repair services authorized under the terms of this warranty will result in the issuance of a service order number. No payment for services rendered will be made by MTI Baths without an MTI authorized service order.

**Labor Not Included:** MTI Baths is not responsible for labor charges or other charges related to the removal or installation or other costs involved in repairing or replacing the Product or the expense of shipment to or from the factory, except where provided by applicable law.

To obtain further information about this Limited Warranty and MTI Baths' warranty obligations please contact the MTI Service Department at 800.783.8827 or email [service@mtibaths.com](mailto:service@mtibaths.com). Must have registration number available.

No other company or person has any authority to make any warranties or representations concerning MTI Baths or any Products. Accordingly, MTI Baths is not responsible for any such warranties or representations.

**THIS LIMITED WARRANTY IS THE SOLE WARRANTY FOR THE MTI BATHS PRODUCT AND IS IN LIEU OF ALL OTHER WARRANTIES, EXPRESSED OR IMPLIED, RELATING TO SUCH PRODUCT INCLUDING WITHOUT LIMITATION ANY IMPLIED WARRANTIES OF CONDITION, MERCHANTABILITY, DESIGN, OPERATION OR FITNESS FOR ANY PARTICULAR USE OR PURPOSE, OR QUALITY OF THE MATERIALS OR WORKMANSHIP.**

**Disclaimers:** MTI Baths is not liable for special, incidental or consequential damages/losses from any cause, including water damage to carpeting, floors, or ceilings.

**SOME STATES DO NOT ALLOW THE EXCLUSION OR LIMITATION, IN WHOLE OR IN PART, OF WARRANTIES OR THE EXCLUSION OF SPECIAL, CONSEQUENTIAL OR INCIDENTAL DAMAGES. THEREFORE, THE ABOVE LIMITATIONS OR EXCLUSIONS MAY NOT BE APPLICABLE TO YOU.**

#### TEAK PRODUCTS WARRANTY

**Teak Seats** from MTI Baths are warranted for parts only against defects in material and workmanship for a period of one year from date of purchase. They are handcrafted of the finest teak and manufactured to MTI's specifications.

**Claims Process:** All claims must be submitted to [service@mtibaths.com](mailto:service@mtibaths.com) to obtain replacement parts. Each claim must set forth the date of discovery, a description of the defect, the name and address of the installer of the Product, the date and address of installation, and the type or style of the Product.

The product warranty must be registered within one hundred twenty days from purchase. The product warranty must be registered before a claim can be assessed under the terms of this warranty. Registration can be completed online at [mtibaths.com/contact-us/warranty-registration/](http://mtibaths.com/contact-us/warranty-registration/) or mailed to MTI Baths at 670 N. Price Rd. Sugar Hill, Georgia 30518. Any claim submitted via an alternative method or without the required information shall be null and void.

Replacement parts are subject to availability, and may differ from those originally supplied. MTI can not guarantee that parts currently in use will be available in the future. Changes in materials, parts or specifications are not valid reasons for product refusal or replacement under warranty claims.

MTI Baths is NOT liable for Incidental or consequential damage, loss of time, Inconvenience, Incidental expenses, labor or material charges or any other costs related to the application of this warranty.



**CUSTOMER  
SERVICE**  
Monday-Friday  
8am-6pm EST

To verify coverage or request service, please contact the MTI Service Department and have serial or registration number available.

**800-783-8827**  
[service@mtibaths.com](mailto:service@mtibaths.com)



## MTI Baths, LLC

### Commercial Limited Two-Year Product Warranty<sup>1</sup>

MTI Baths is proud to offer the Commercial Limited Two-Year Product Warranty set forth below for Cosmopolitan Collection shower bases (the "Products"). This Limited Warranty is in lieu of all other warranties.

**Application:** This Limited Warranty applies solely to Products purchased from an authorized MTI Baths distributor or retailer after March 1, 2023 and installed in the United States. This warranty is product specific and extends only to the original consumer/purchaser of the MTI Baths Product. Original purchase and installation must be within the boundaries of the continental USA<sup>2</sup>. The warranty terminates after transfer of ownership or if the product is installed or relocated outside the boundaries of the continental USA by the original consumer/purchaser prior to the expiration of the warranty period. Warranty coverage begins from date of purchase. Proof of purchase must be provided to MTI Baths upon request. Display floor models and overstock sale units are excluded from this Limited Warranty. Drain kits and accessories that are not manufactured by MTI are excluded from this product warranty.<sup>3</sup> Accessories manufactured by MTI Baths carry a one year warranty for parts only.

**Two-Year Warranty:** MTI Baths warrants that its Products are free of defects in material and workmanship for two years from date of purchase to the original purchaser so long as (1) the Product is installed, maintained and used according to MTI Baths' recommended installation and maintenance procedures and usage instructions, and (2) use of the Product is limited to personal, family or single household purposes. Product installation location must be an indoor, climate-controlled, commercial environment.

**Shell:** MTI Baths (MTI) warrants the shell of the mineral composite shower base against defects in material and workmanship from the date of purchase to the original purchaser. Slight variations in the surface are indigenous to the natural stone appearance and do not compromise the structural integrity of the product, therefore are not considered defects or flaws. Blemishes, air holes or casting marks on the underside of the base are not considered defects and do not affect the performance or quality of the product.

**Exclusions:** This Limited Warranty does not apply to or cover defects, damage or other failures that are the result of normal wear and tear of Products, unauthorized or unreasonable use or improper handling; caused by freight carriers, installers, users or other persons; or accidents or acts of God (e.g. earthquakes, floods, storms). MTI is not responsible for the cost of removing or reinstalling the Product or costs associated with any adjacent materials.

MTI Baths is not responsible for any damage caused by failure to follow Product instructions; neglect by the user during use of the Product; incorrect operation; lack of proper routine maintenance; the use of improper cleaners, abrasives, food, beverages (e.g., red wine), bathing products with harmful dyes or other contents (e.g., glitter), medicinal products (e.g., mecurochrome), make-up or hair dye; cigarette burns or burns from hot appliances; or misuse of any kind. MTI does not warrant leaks associated with improper drain installation or connections supplied by the installer. This warranty does not cover noises that result from poorly located or improperly installed or maintained plumbing vents. Improper installation of, or any alteration, customization or modification to the Product voids this Limited Warranty in its entirety. MTI Baths is not responsible for any damages caused by leaving a running shower unattended<sup>4</sup>.

The Product must be water tested for proper drainage, system operation, and leak detection prior to final installation and installed per the installation instructions provided. Failure to do so will void this warranty.

MTI BATHS IS NOT LIABLE FOR INCIDENTAL OR CONSEQUENTIAL DAMAGE, LOSS OF TIME, INCONVENIENCE, INCIDENTAL EXPENSES, LABOR OR MATERIAL CHARGES OR ANY OTHER COSTS RELATED TO THE APPLICATION OF THIS WARRANTY.

<sup>1</sup> Residential customers please refer to our Residential Warranty.

<sup>2</sup> Exceptions for Alaskan and Canadian Customers: MTI Baths extends the complete Limited Two-Year Product Warranty to any mineral composite shower base installed within a 75-mile radius of an Authorized MTI Distributor. Any installation site outside the 75-mile radius will be covered for one year, parts only. Exceptions for Hawaiian Customers: MTI Baths extends the complete Limited Two-Year Product Warranty to Hawaiian customers on the islands of Maui, Kauai and Oahu only. All other locations will be covered for one year, parts only.

<sup>3</sup> Many drain kits and accessories carry a factory warranty direct from the manufacturer. Terms vary among manufacturers. Special order finishes for drain kits are excluded from this product warranty.

<sup>4</sup> Never leave a running shower unattended.



## MTI Baths

### Commercial Limited Two-Year Product Warranty\*

**Warranty Claim Process:** All claims under the Limited Warranty must be submitted in writing to MTI Baths within 10 days following discovery of the basis of the claim. All such claims must be submitted to [service@mtibaths.com](mailto:service@mtibaths.com) to obtain authorized service. Each claim must set forth the date of discovery, a description of the defect, the name and address of the installer of the Product, the date and address of installation, and the type or style of the Product.

The product warranty must be registered within one hundred twenty days from purchase. The product warranty must be registered before service for any malfunction or defect can be authorized. Registration can be completed online at [mtibaths.com/contact-us/warranty-registration/](http://mtibaths.com/contact-us/warranty-registration/) or mailed to MTI Baths at 670 N. Price Rd. Sugar Hill, Georgia 30518. Any claim submitted via an alternative method or without the required information shall be null and void.

Damage that occurred in transit is the responsibility of the carrier. The consignee must open and inspect the Product for damage when it is delivered. If the Product is damaged, this must be reported immediately to both the seller and the carrier in writing and an inspection must be requested. In the event that the carrier fails to respond, report such response to both the seller and the carrier. Any freight claims must be filed within ten business days. The installer(s) or person(s) (Consignee) acting on behalf of the Product owner is responsible for ensuring that the Product is free of defect or damage prior to installation. The Product Owner or Consignee must open and inspect the Product for damage when it is delivered. Product damage must be reported prior to installation.

**Warranty Performance/Limited Remedy:** As the sole and exclusive remedy, and MTI Baths' sole liability, for breach of the Limited Warranty, MTI Baths, will, at its election, repair, replace or make appropriate adjustments to the Product. MTI reserves the right to inspect the malfunction or defect on site and repair or replace the Product at its discretion. In all cases a reasonable time must be allowed for commencement and completion of warranty repairs, replacements, or adjustments. Repairs will be made by an authorized MTI Baths repairer. Replacement parts and/or repair services authorized under the terms of this warranty will result in the issuance of a service order number. No payment for services rendered will be made by MTI Baths without an MTI authorized service order.

**Labor Not Included:** MTI Baths is not responsible for labor charges or other charges related to the removal or installation or other costs involved in repairing or replacing the Product or the expense of shipment to or from the factory, except where provided by applicable law.

To obtain further information about this Limited Warranty and MTI Baths' warranty obligations please contact the MTI Service Department at 800.783.8827 or email [service@mtibaths.com](mailto:service@mtibaths.com). Must have registration number available.

No other company or person has any authority to make any warranties or representations concerning MTI Baths or any Products. Accordingly, MTI Baths is not responsible for any such warranties or representations.

**THIS LIMITED WARRANTY IS THE SOLE WARRANTY FOR THE MTI BATHS PRODUCT AND IS IN LIEU OF ALL OTHER WARRANTIES, EXPRESSED OR IMPLIED, RELATING TO SUCH PRODUCT INCLUDING WITHOUT LIMITATION ANY IMPLIED WARRANTIES OF CONDITION, MERCHANTABILITY, DESIGN, OPERATION OR FITNESS FOR ANY PARTICULAR USE OR PURPOSE, OR QUALITY OF THE MATERIALS OR WORKMANSHIP.**

**Disclaimers:** MTI Baths is not liable for special, incidental or consequential damages/losses from any cause, including water damage to carpeting, floors, or ceilings.

**SOME STATES DO NOT ALLOW THE EXCLUSION OR LIMITATION, IN WHOLE OR IN PART, OF WARRANTIES OR THE EXCLUSION OF SPECIAL, CONSEQUENTIAL OR INCIDENTAL DAMAGES. THEREFORE, THE ABOVE LIMITATIONS OR EXCLUSIONS MAY NOT BE APPLICABLE TO YOU.**



**CUSTOMER  
SERVICE**  
Monday-Friday  
8am-6pm EST

To verify coverage or request service, please contact the MTI Service Department and have serial or registration number available.

**800-783-8827**  
[service@mtibaths.com](mailto:service@mtibaths.com)



mtibaths.com

MTI Baths  
670 North Price Road  
Sugar Hill, GA 30518  
p: (800) 783-8827  
f: (800) 438-8827

© Copyright 2021 by MTI Baths, LLC  
Modification Rights Reserved. 0323