

Petra 2 Vanity Sink

Worksheet - Single Bowl C802S

Please fill in the information below:

Date: _____

Contact Name: _____

Company / Address: _____

ZIP Code:*

Phone:*

Email:*

To receive a price quote, send this completed worksheet to:

Email: quotes@mtibaths.com

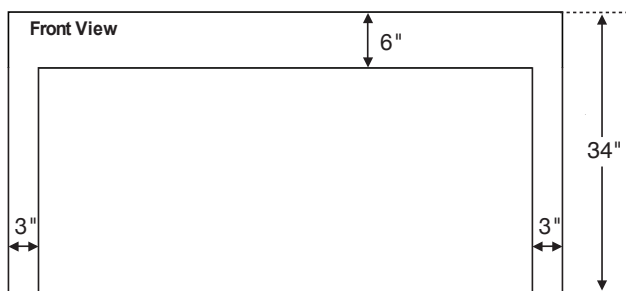
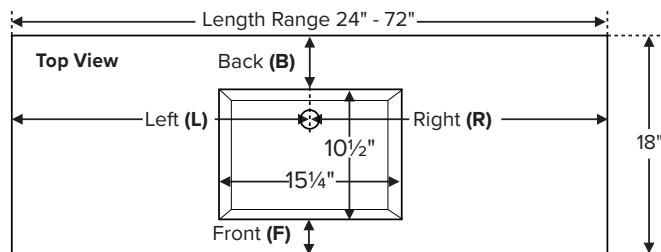
Phone: 800-783-8827

Fax: 800-438-8827

*Incomplete information may result in an unprocessed request for quote. Please be sure to provide your company name, ZIP code and contact information on this form. Thank you.

WORKSHEET INSTRUCTIONS:

- Vanity Sink is available in 9 standard lengths ranging between 24" and 72". Enter exact size below. Custom lengths are not available.
- Overall height (34") and depth (18") are fixed and not customizable.
- Select whether faucet will be deck-mounted or wall-mounted.
- Bowl placement options: For length, choose 'centered' or enter specific measurements. For depth, select MTI's 'standard' recommended bowl placement for deck-mounted faucet applications, or enter specific measurements.
- Send this worksheet, along with order form and purchase order to the MTI order entry department.



Note: Due to the handcrafted nature of this product, please allow for a tolerance of up to 1/4" for overall dimensions and 1/2" for bowl placement.

Vanity Length - Enter a size listed below:

_____ Choose from: 24", 30", 36", 42", 48", 54", 60", 66", or 72"

Faucet Application - Choose one of the following:

_____ Deck-Mount **OR** _____ Wall-Mount

Bowl Placement Measurements

Length - Choose 'Centered' **OR** enter measurements for Left (L) AND Right (R)

_____ Centered on vanity.

OR

_____ Inches (L) from left edge of vanity to center of bowl.

OR

_____ Inches (R) from right edge of vanity to center of bowl.

Depth - Choose 'Standard' **OR** enter a measurement from Back (B) **OR** Front (F).

_____ Standard bowl placement for deck-mount faucets.

OR

_____ Inches (B) from back edge of top to back edge of bowl.

OR

_____ Inches (F) from front edge of top to front edge of bowl.

Installation Position (check the side(s) that will be against the wall)

☐ Front

☐ Back

☐ None

☐ Left

☐ Right

Distributor Signature _____

CSA Model #: MTCS-V802



Vanity Sink Order Form

Worksheet and order form must be filled out by an authorized MTI dealer.

Single Bowl - Available in up to 9 standard lengths, depending on bowl selected, with fixed depth and height. Use the worksheet to specify bowl placement measurements.

Vanity Size

Length	Finish	Part #	
24"	Matte	CV-S24MT	
	Gloss	CV-S24GL	
30"	Matte	CV-S30MT	
	Gloss	CV-S30GL	
36"	Matte	CV-S36MT	
	Gloss	CV-S36GL	
42"	Matte	CV-S42MT	
	Gloss	CV-S42GL	
48"	Matte	CV-S48MT	
	Gloss	CV-S48GL	
54"	Matte	CV-S54MT	
	Gloss	CV-S54GL	
60"	Matte	CV-S60MT	
	Gloss	CV-S60GL	
66"	Matte	CV-S66MT	
	Gloss	CV-S66GL	
72"	Matte	CV-S72MT	
	Gloss	CV-S72GL	

Required Information

Required Information		Part #	
Vanity Sink Style	Parsons Legs on 2 sides	CPVS2	
	Parsons Legs on 1 side (Deduct)	CPVS1	
	For 1 sided legs, specify Right or Left:		
	Waterfall Design on 2 sides	CWVS2	
	Waterfall Design on 1 side	CWVS1	
	For 1 sided Waterfall, specify Right or Left:		
Colors	White	CWH	
	Biscuit	CBI	
Integrated Overflow	None	CION	
	Rear bowl x1	CIOB	
	Rear bowl x2	CIOB2	
Faucet Holes	None	CFHN	
	Up to 6	CFH	

Available vanity styles - choose from one of the following:
See "Required Information" above and make a selection.

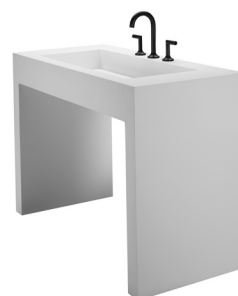
Waterfall - finished appearance on left & right side of vanity.

Single Bowl Models

Crate / Handling Fee applies

Bowl name	Bowl size (rounded)	Fits vanity (size range)	Part #
Petra 2	15" x 10"	24" to 72"	C802S

Options and Accessories		Part #	
Backsplash 4" (H) x 5/8" thick	Up to 50" length	CBSM	
	51" up to 72" length	CBLG	
Sidesplash 4" (H) x 5/8" thick	Left	CSL	
	Right	CSR	
Floating Shelf See next page for overall dimensions of each size and a listing of compatible Vanity Sink sizes	24" Small - matte	CFSSMT	
	24" Small - gloss	CFSSGL	
	30" Medium - matte	CFSMMT	
	30" Medium - gloss	CFSMGL	
	42" Large - matte	CFSLMT	
	42" Large - gloss	CFSLGL	
	48" X-Large - matte	CFSXLMT	
	48" X-Large - gloss	CFSXLGL	
Waterfall Shelf Not available with vanities with the Parsons Legs	Up to 30" vanity - matte	CSSSMT	
	Up to 30" vanity - gloss	CSSSGL	
	Up to 42" vanity - matte	CSSMMT	
	Up to 42" vanity - gloss	CSSMGL	
	Up to 54" vanity - matte	CSSLMT	
	Up to 54" vanity - gloss	CSSLGL	
	Up to 72" vanity - matte	CSSXLMT	
	Up to 72" vanity - gloss	CSSXLGL	
Waterfall Shelf with Teak Insert Not available with vanities with the Parsons Legs	Up to 30" vanity - matte	CTSSMT	
	Up to 30" vanity - gloss	CTSSGL	
	Up to 42" vanity - matte	CTSMMT	
	Up to 42" vanity - gloss	CTSMGL	
	Up to 54" vanity - matte	CTSLMT	
	Up to 54" vanity - gloss	CTSLGL	
	Up to 72" vanity - matte	CTSXLMT	
	Up to 72" vanity - gloss	CTSXLGL	
Teak Sink Tray		CTKST	



Parsons - featuring four legs with vanity open on all sides.



Additional construction and options information

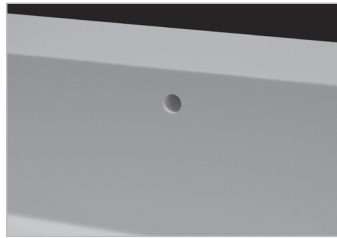
Integrated overflow

Can be installed on the inside back wall of sink.

Square/Rec. Bowl overflow

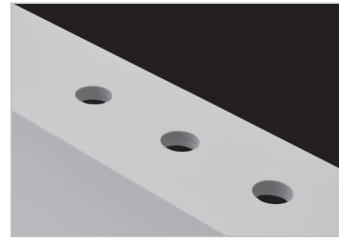


Round/Oval Bowl overflow



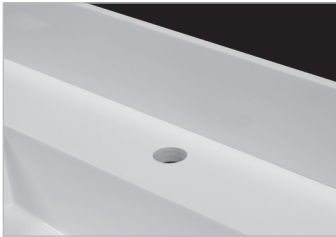
Faucet Holes - up to 6 drilled.

Standard hole size is 1 $\frac{3}{8}$ " in diameter.
Must provide specific drilling instructions on order form.

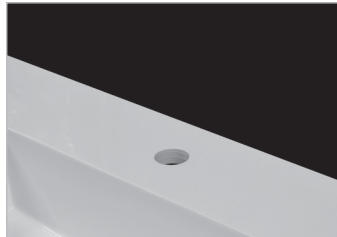


Backsplash / Sidesplash

Measures 4" (H) and $\frac{5}{8}$ " thick.
Field-installed on finished surface of vanity.



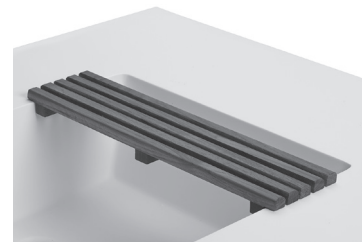
Shown above with optional
backsplash.



Shown above without backsplash.

Teak Sink Tray

An ideal Vanity Sink accessory, hand-crafted to fit rectangular sink bowls.
Both stylish and practical, the MTI teak sink tray can be used as a resting
place for grooming articles and toiletries. Flat slatted teak design lets water
and soap run through, so there is no residue build-up.



Floating Shelf

Available in four lengths: 24" (small), 30" (medium), 42" (large) and
48" (extra large). Each size measures 17" deep x 3" high and is open on
the bottom side to accommodate mounting hardware (included). Wall-
mounted floating shelf is designed to mount below the Vanity Sink.

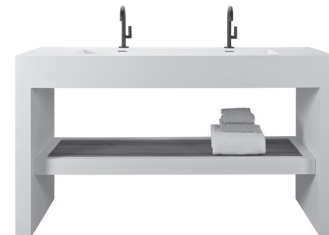
Ordering Information:

- 24" shelf fits Vanity Sink 36" and up.
- 30" shelf fits Vanity Sink 42" and up.
- 42" shelf fits Vanity Sink 54" and up.
- 48" shelf fits Vanity Sink 60" and up.



Shelf for Waterfall Vanity

The Shelf for Waterfall Vanity is a full length shelf that is attached to either
side of the Waterfall sides and measures 2" tall. Shelves can be ordered
with a smooth top or with a genuine Teak Insert, and are also available in a
Matte or Gloss finish. This is not available for vanities with the Parsons Legs.



Half Vanity Option

Available for both the Parsons and Waterfall styles. This
option allows you to choose to have one side of the vanity
attached to the wall, and the other to be freestanding.

- Choose between right-hand or left-hand for the Parsons legs or
Waterfall side.
- Can be ordered for Vanities ranging from 24" to 72".
- Hardware for attaching to wall is not included.



Waterfall Design on 1 side shown