

Inline Heater

Inline Heater

Inline water heating systems are available for Designer Collection soakers, whirlpools, stream and airbath packages.

These systems use electricity to maintain bath water heat, not to heat cold water.

The thermostat for these systems is pre-set by the manufacturer to maintain bath water temperature at 104° F, so the bather can enjoy a longer bath.

Cannot be combined with microbubbles.

For Whirlpool and Stream Bath

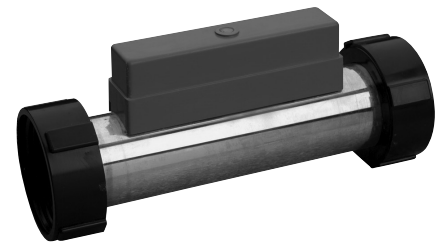
The inline heating system for whirlpools and stream baths is activated when the pump is turned on, maintaining the temperature of the bath water. No external switch is needed. 2 different heaters are used:

- 1500-watt inline heater is available for most Designer baths.
- 1500-watt heater draws 12 amps, requiring a 15 amp, 110 VAC circuit.
- 650-watt heater is used for Airbath with Ultra Whirlpool and Airbath Elite with Ultra Whirlpool packages.
- 650-watt heater draws 5.4 amps.
- Electrical circuit must be connected to a supply protected by a ground fault circuit interrupter (GFCI).

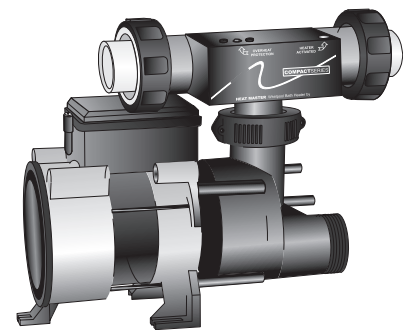
NOTE: Inline Heaters are not sold separately.

Inline Heater

For Whirlpool and Stream Bath (HTI) **\$570**



Inline heater



Inline heater connected to the standard pump

For Soaker and Airbath

The inline heating system for soaking tubs and airbaths is manually activated via a dedicated push button.

This system gently recirculates bath water through the inline heater, with negligible disturbance to the water.

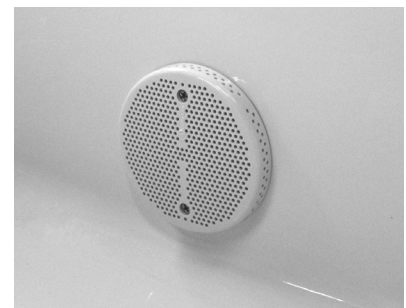
- Not available for freestanding tubs.
- Uses the 1500-watt inline heater described above and a 1/2 hp recirculating pump.
- With the pump, the system draws 17.5 amps, requiring a separate 20 amp, 110VAC dedicated circuit.
- Must plan for on-site access to inline heater and recirculating pump.

NOTE: Inline Heaters are not sold separately.

Inline Heater with Recirculating Pump

For Soaker and Airbath (HTISOAK) **\$825**

Inline Heating System



The water is drawn in through an intake and reintroduced into the bath through a twin output.